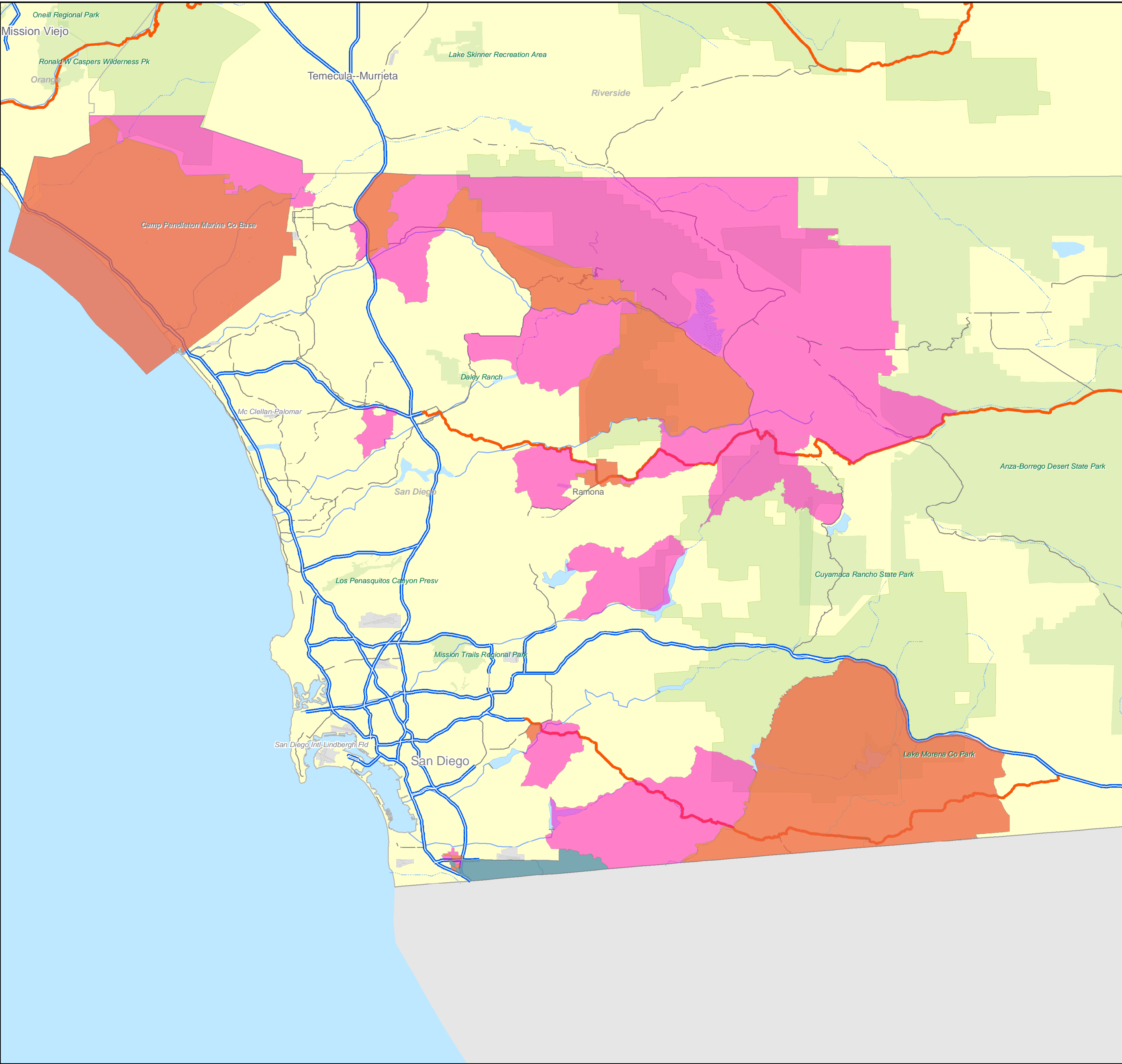


Needs Assessment - San Diego County Fires (2)



- 1 (LSC Eligibly Population > 100, Percent Population LSC eligible > 60%)
- 2 (LSC Eligibly Population > 100, Percent Population LSC eligible > 40%)
- 3 (LSC Eligibly Population > 100, Percent Population LSC eligible > 20%)

In October of 2007 wild fires raged through San Diego county. At least one person was killed and dozens were injured. More than 655 homes burned - roughly 130 in mountain areas. 168 businesses and other structures were destroyed. The various fires covered roughly 240,000 acres (374 square miles).

This map was created to assist legal aid organizations to identify areas affected by the fires where a large populations of low-income persons reside.

